

An aerial photograph of a landscape featuring a dense forest of evergreen trees. A multi-lane road runs diagonally across the lower half of the image. To the right of the road, there is a baseball field with a white pitcher's mound and a green outfield. In the background, a residential area with houses and a golf course are visible under a clear blue sky.

City of Ridgefield *Carty Road Subarea Plan*

Don Hardy, WSP, Senior Project Manager

City Council Presentation | October 10, 2019





2

Why is the Carty Road subarea planning process occurring?

The subarea planning process is a response to several annexation petition requests received by City Council. Initiating a subarea plan is a tool that will allow the City Council to address impacts and compatibility related to future growth in the subarea boundary.

To give the community an opportunity to participate in the process and establish a shared vision for the area

To understand community concerns and to prepare a plan for future development and city services.

Does a subarea plan include annexation?

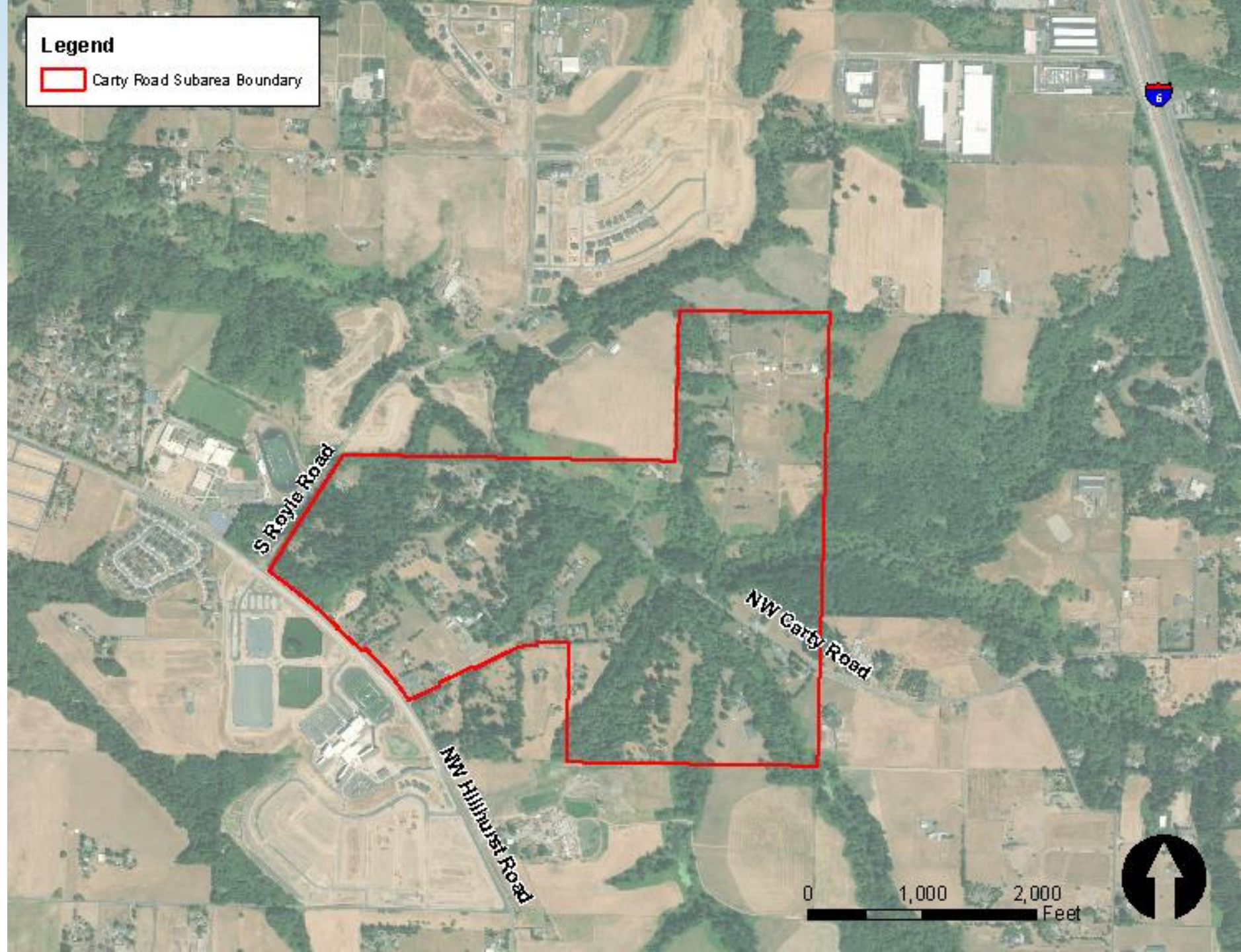
A subarea plan is an optional element in a city's comprehensive plan.

- The subarea planning process does not include annexation.
- The subarea plan can be adopted independently from annexation.

Annexation is governed by state law and includes different methods for initiation (RCW 35A.14). The annexation process does not require subarea planning.

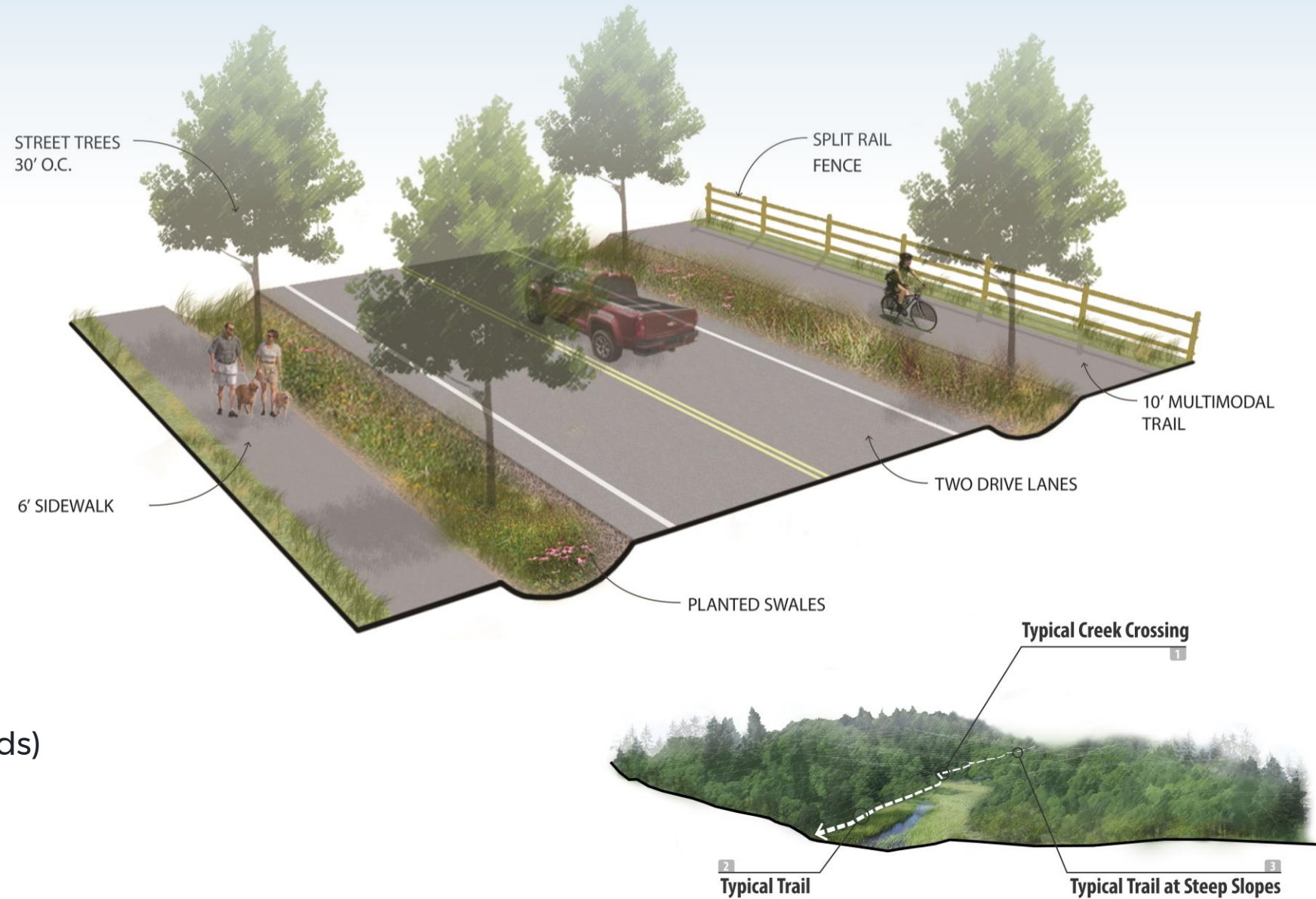
What is a subarea plan?

A subarea plan is a plan for a designated area that is developed from the community's vision and shared guiding principles.



What is included in a subarea plan?

- Community Engagement
- Visioning
- Concept Planning
- Implementation Measures (zoning code, amendments and development standards)





6

How will we inform and engage the community?

There will be multiple ways to get information, provide feedback, and stay engaged throughout the process.

Community Engagement Toolbox:

- Factsheets and FAQs
- Project Website and Online Surveys
- Stakeholder Interviews
- Advisory Group Meetings
- Community Open House

What is included in the Carty Road Subarea Plan?

- Visioning and Community Outreach
- Existing Conditions Assessment (transportation, utilities, environmental, and market)
- Land Use and Transportation Plan
- Recommendations for Implementation
- Adoption





8

Final Subarea Plan

The goal of the Carty Road Subarea Plan is to engage the community, develop a unified vision to inform future development, and provide a path to implementation.

An aerial photograph of a suburban landscape. A dense forest of evergreen trees occupies the center-left. To the right, a multi-lane asphalt road runs diagonally. Further right, a baseball field with a white infield and green outfield is visible. In the background, there are rolling hills and distant mountains under a clear blue sky.

City of Ridgefield *Carty Road Subarea Plan* *Questions?*

Don Hardy, WSP, Senior Project Manager, 360-823-6115, don.hardy@wsp.com

City Council Presentation | October 10, 2019

